

Juvenile Detention Centers

The Department operates twenty-six secure regional juvenile detention centers of which one was contracted to a private provider in 2004. These centers provide temporary placement for youth pending a court adjudication, disposition, or execution of a court order. Secure detention is funded primarily by state general revenue dollars.

All centers receive additional federal funding in the form of National School Lunch and Breakfast funds. Educational services are funded by the Department of Education through local school districts. In addition to secure custody and care, secure detention facilities provide basic educational assessments and services to school age youth, medical services, mental health counseling, substance abuse counseling, crisis intervention, food services and structured recreational activities. Secure detention facilities must also provide for the constitutional rights of the youth in custody by affording them visitation, telephone, correspondence and other rights. There are two types of detention care, as follows:

- **Secure Detention:** The temporary custody of the youth while the youth is under the physical restriction of a detention center or facility pending adjudication, disposition, or placement.
- **Home Detention Supervision:** The temporary custody of the youth while the youth is released to the custody of the parent, guardian, or custodian in a physically nonrestrictive environment under the supervision of Department of Juvenile Justice staff pending adjudication, disposition, or placement.

Pasco Regional Detention Center, Pasco County



Volusia Regional Detention Center, Volusia County



Detention Center Listing by Judicial Circuit

The following table provides a list of detention centers by judicial circuit and county.

Circuit	County	Facility Name	County Catchment Area	Fixed Beds	Average Daily Population 2003/2004	Date at Current Site
1	Escambia	Escambia Regional Juvenile Detention Center	Escambia, Santa Rosa	50	64	1976
1	Okaloosa	Okaloosa Regional Juvenile Detention Center	Okaloosa, Walton	50	47	1999
2	Leon	Leon Regional Juvenile Detention Center	Leon, Gadsden, Jefferson, Franklin, Liberty, Madison, Taylor, Wakulla	56	57	1993
4	Duval	Duval Regional Juvenile Detention Center	Duval, Clay, Nassau	144	93	1979
5	Marion	Marion Regional Juvenile Detention Center	Marion, Citrus, Hernando, Lake, Sumter	88	94	1982
6	Pasco	Pasco Regional Juvenile Detention Center	Pasco	57	51	1987
6	Pinellas	Pinellas Regional Juvenile Detention Center	Pinellas	120	124	1994
7	St. Johns	St. Johns Regional Juvenile Detention Center	St. Johns, Putnam	50	29	2000
7	Volusia	Volusia Regional Juvenile Detention Center	Volusia, Flagler	90	63	1981
8	Alachua	Alachua Regional Juvenile Detention Center	Alachua, Baker, Bradford, Columbia, Dixie, Gilchrist, Hamilton, Lafayette, Levy, Suwanee, Union	72	59	1985
9	Orange	Orange Regional Juvenile Detention Center	Orange	151	146	1978
9	Osceola	Osceola Regional Juvenile Detention Center	Osceola	50	39	2000
10	Polk	Polk Regional Juvenile Detention Center	Polk, Hardee, Highlands	90	81	1980
11	Miami-Dade	Miami-Dade Regional Juvenile Detention Center	Miami-Dade	226	197	1977
12	Manatee	Manatee Regional Juvenile Detention Center	Manatee, Sarasota, DeSoto	72	69	1986
13	Hillsborough	Hillsborough Regional Juvenile Detention Center - East	Hillsborough	50	57	1998
13	Hillsborough	Hillsborough Regional Juvenile Detention Center - West	Hillsborough	93	100	1979
14	Bay	Bay Regional Juvenile Detention Center	Bay, Calhoun, Gulf, Holmes, Jackson, Washington	52	49	1987
15	Palm Beach	Palm Beach Regional Juvenile Detention Center	Palm Beach	93	92	1978
16	Monroe	Monroe County Detention Center	Monroe	15	4	2004
17	Broward	Broward Regional Juvenile Detention Center	Broward	109	105	1980
18	Brevard	Brevard Regional Juvenile Detention Center	Brevard	52	59	1990
18	Seminole	Seminole Regional Juvenile Detention Center	Seminole	39	44	1974
19	St. Lucie	St. Lucie Regional Juvenile Detention Center	St. Lucie, Indian River, Martin, Okeechobee	78	70	1983
20	Collier	Collier Regional Juvenile Detention	Collier	50	30	2001
20	Lee	Southwest Regional Juvenile Detention Center	Lee, Hendry, Glades, Charlotte	60	61	1980
Total				2057	1884	

Table 18-1

Profile of Youth Served FY 2003/2004

The following tables provide demographic data taken from service history extracts and delinquency referral extracts developed from files in the Department’s Juvenile Justice Information System (JJIS) (margin of error +/-1%). This data is based on youth served, not admissions.

	AGE						Served
	0-7	8 - 11	12 - 14	15 - 17	18+	Unknown	
Statewide	3	657	8,557	22,890	2,456	0	34,563
Percentage	0%	2%	25%	66%	7%	0%	100%

Table 18-2

	GENDER/RACE						Served	
	Male			Female				
	White	Black	Other	White	Black	Other		
Statewide	13,914	12,311	152	4,501	3,644	41	0	34,563
Percentage	40%	36%	0%	13%	11%	0%	0%	100%

Table 18-3

Detention Programs

The following chart shows the overall performance of the thirteen secure detention centers that received a full QA review in 2004. Six centers scored in the “commendable” performance range, four centers are in the “acceptable” performance range, two centers are in the minimal performance range, and one center failed to meet the minimum standards set by the Department.

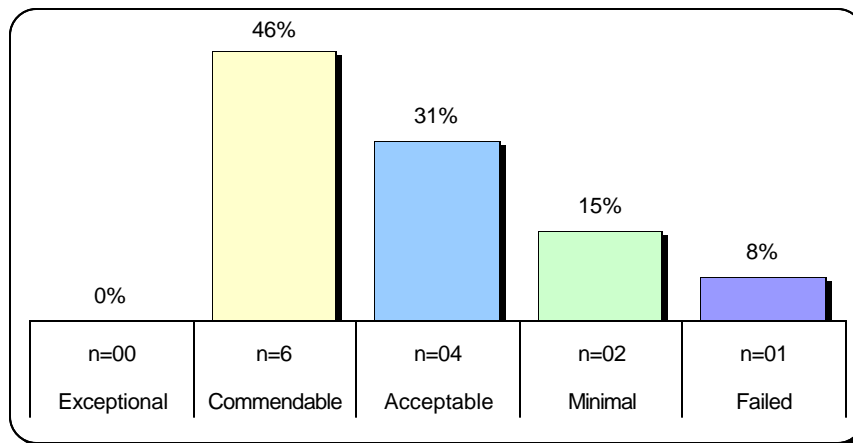


Chart 18-1

Performance Scale: 100-90%: Exceptional; 89-80%: Commendable; 79-70%: Acceptable; 69-60%: Minimal; 59-0%: Failed to Meet Standards

Highest and Lowest Rankings by Program Component

The following table shows the overall performance for detention centers by program component. The second column indicates the number of performance key indicators that were reviewed in each program component. Behavior management and disciplinary practices and mental health and substance abuse treatment are areas that need improvement.

PROGRAM COMPONENT	NUMBER OF PERFORMANCE KEY INDICATORS	STATEWIDE SCORE
Training and Staff Development	4	86%
Admission and Orientation Process	4	82%
Education Services	7	81%
Living Environment	10	80%
Program Management, Leadership and Community Relations	8	79%
Program Safety and Emergency Procedures	4	78%
Food Services	3	77%
Program Security	9	77%
Health Services	13	72%
Behavior Management and Disciplinary Practices	8	67%
Mental Health and Substance Abuse Treatment	11	67%

Table 18-4

Year-to-Year Performance Comparison 1997-2004

The following chart shows the year-to-year performance of detention centers over an eight year period. Program performance declined six percent between 2003 and 2004.

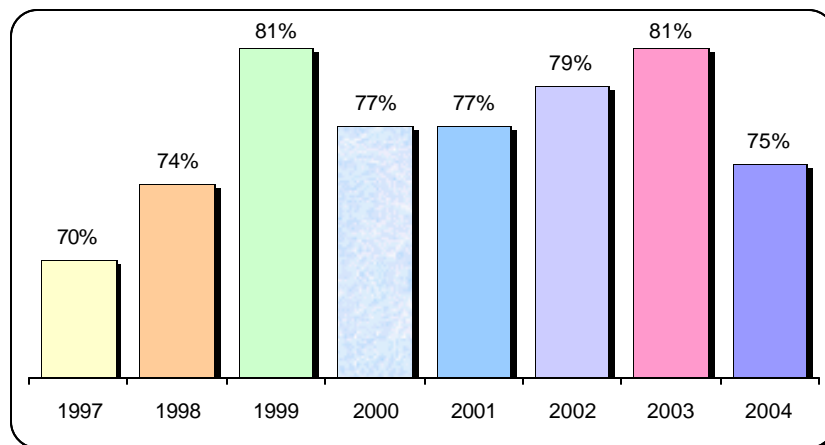


Chart 18-2

Performance Scale: 100-90%: Exceptional; 89-80%: Commendable; 79-70%: Acceptable; 69-60%: Minimal; 59-0%: Failed to Meet Standards

Programs Ranked by QA Performance

The following table ranks all detention centers that received a full QA review in 2004. The quality assurance performance rating is derived from the overall evaluation of the various program components within each program model.

Rank	Circuit	County	Program Name	QA Performance Score
1	12	Manatee	Manatee Regional Juvenile Detention Center	83%
2	2	Leon	Leon Regional Juvenile Detention Center	82%
2	4	Duval	Duval Regional Juvenile Detention Center	82%
2	7	Volusia	Volusia Regional Juvenile Detention Center	82%
3	10	Polk	Polk Regional Juvenile Detention Center	81%
4	6	Pasco	Pasco Regional Juvenile Detention Center	80%
5	19	St. Lucie	St. Lucie Regional Juvenile Detention Center	75%
6	18	Seminole	Seminole Regional Juvenile Detention Center	73%
7	13	Hillsborough	Hillsborough Regional Juvenile Detention Center - West	71%
8	20	Lee	Southwest Regional Juvenile Detention Center	70%
9	15	Palm Beach	Palm Beach Regional Juvenile Detention Center	69%
10	9	Orange	Orange Regional Juvenile Detention Center	64%
11	11	Miami-Dade	Miami-Dade Juvenile Detention Center	59%
	16	Monroe	Monroe Detention Center	NR ¹
	18	Brevard	Brevard Regional Juvenile Detention Center	NR ²

¹Program not reviewed (NR) because it opened in 2004.

²Program not reviewed (NR) due to hurricane.

Table 18-5

Deemed and Special Deemed Status Reviews

The following table identifies the detention centers that are in deemed status. Deemed and special deemed status are special considerations granted to programs that achieve a performance rating of at least 80% and a compliance rating of at least 90%. Following the qualifying review, the “special consideration” lasts for two to three years during which no QA review or only abbreviated, short-form reviews are conducted at the program site. Programs in this category do not receive a full QA review. Teams are on site for only one day to assess that the program is meeting Departmental requirements. For additional information on deemed and special deemed status, refer to chapter III of this report.

Circuit	County	Program Name	Status	Year	Year scheduled for a full review
1	Escambia	Escambia Regional Juvenile Detention Center	Deemed	2003	2006
1	Okaloosa	Okaloosa Regional Juvenile Detention Center	Deemed	2003	2006
5	Marion	Marion Detention Center	Deemed	2002	2005
6	Pinellas	Pinellas Regional Juvenile Detention Center	Deemed	2003	2006
7	St. Johns	St. Johns Regional Juvenile Detention Center	Deemed	2002	2005
8	Alachua	Alachua Detention Center	Deemed	2002	2005
9	Osceola	Osceola Regional Juvenile Detention Center	Deemed	2003	2006
13	Hillsborough	Hillsborough Regional Juvenile Detention Center - East	Deemed	2002	2005
14	Bay	Bay Detention Center	Deemed	2002	2005
17	Broward	Broward Regional Juvenile Detention Center	Deemed	2003	2006
20	Collier	Collier Regional Juvenile Detention	Deemed	2003	2006

Table 18-6

Highest Scoring Key Indicators Detention Programs

The following table lists the QA key indicators of which seven or more of the detention centers scored in the superior range.

KI #	Key Indicator	N	Percentage in Superior Performance Range
1.03	Community advisory board	8	61.54%
1.04	Effective communication and monthly staff meetings	7	53.85%
1.07	Volunteer and mentoring program	10	76.92%
2.04	Parental notification of admission	7	53.85%
2.06	Orientation process	7	53.85%
2.10	Weekly detention reviews	9	69.23%
3.04	Program activity space	10	76.92%
3.07	Faith-based opportunities	8	61.54%
4.10	Precautionary observation of potentially suicidal youth	8	61.54%
4.11	Use of secure rooms for potentially suicidal youth	6	46.15%
5.06	Confinement beyond six hours	8	61.54%
7.17	Healthcare authorization for treatment and notification of care	7	53.85%
8.07	Escape prevention and response plan	7	53.85%
8.15	Transportation of youth	10	76.92%
9.04	Fire prevention program	7	53.85%
10.05	Annual training requirements for JDOs, SJDOs, and JDOS	10	76.92%
10.07	Annual training requirements for support staff	11	84.62%
10.08	Leadership, supervisory and management training	8	61.54%

N=total number of programs in the range

Table 18-7

Lowest Scoring Key Indicators Detention Programs

The following table lists the QA key indicator on which six or more of the detention centers scored poorly.

KI #	Key Indicator	N	Percentage in Partial Performance Range
1.08	Employee position descriptions and performance reviews (C)	6	46.15%
8.14	Staff visually check the safety of each youth every 10 minutes when in sleeping rooms.(C)	7	53.85%

N=total number of programs in the range

Percentage=percentage of the total number of programs reviewed.

(c)=compliance key indicators

Table 18-8

Program Performance Rating Summaries

Duval Regional Detention Center

Program Type: Detention- Secure
 Restrictiveness Level: NA
 Contract Provider: State Operated
 Review Date: June 7-11, 2004

Circuit: Four
 County: Duval
 Contract Number: NA
 Number of Beds: 144

PROGRAM COMPONENTS	Standard Score*				Performance Rating					
	Applicable Indicators	Raw Score	Max. Poss. Score	Conversion Rating	Meets Standards			Exceeds Standards		
					Failed to Meet Standards	Minimal Performance	Acceptable Performance	Commendable Performance	Exceptional Performance	
					0-59%	60-69%	70-79%	80-89%	90-100%	
ADMINISTRATION										
1	Program Management	8	53	72	87%				X	
10	Training & Staff Devlp.	4	27	36	87%				X	
					0-59%	60-69%	70-79%	80-89%	90-100%	
								X		
CORE SERVICES										
2	Booking	4	28	36	90%					X
3	Living Environment	10	64	90	84%				X	
4	Mental Health/Substance	10	65	90	85%				X	
5	Behavior Management	8	47	72	79%			X		
6	Food Services	3	15	27	71%			X		
7	Health Services	13	75	117	78%			X		
					0-59%	60-69%	70-79%	80-89%	90-100%	
								X		
SAFETY AND SECURITY										
8	Program Security	9	57	81	83%				X	
9	Program Safety	4	20	36	71%			X		
					0-59%	60-69%	70-79%	80-89%	90-100%	
								X		
EDUCATIONAL SERVICES**										
E1	Transition	2	8	18	60%		X			
E2	Service Delivery	2	14	18	90%					X
E3	Educational Resources	2	9	18	65%		X			
E4	Contract Management	1	6	9	81%				X	
					0-59%	60-69%	70-79%	80-89%	90-100%	
								X		
OVERALL PROGRAM PERFORMANCE										
Maximum Possible Score: 711					Failed	Minimal	Acceptable	Commendable	Exceptional	
Program Score: 482					0-59%	60-69%	70-79%	80-89%	90-100%	
Conversion Rating: 82%										
Program Performance: Commendable Performance								X		
OVERALL COMPLIANCE RATING										
Maximum Possible Score: 84					Non-Compliance		Substantial Compliance		Full Compliance	
Compliance Score: 83.6					0-79%		80-89%		90-100%	
Compliance Rating: 100%										
Full Compliance									X	

Hillsborough Regional Juvenile Detention Center-West

Program Type: Detention-Secure **Circuit:** Thirteen
Restrictiveness Level: NA **County:** Hillsborough
Contract Provider: State Operated **Contract Number:** NA
Review Date: August 23-27, 2004 **Number of Beds:** 93

PROGRAM COMPONENTS	Standard Score*				Performance Rating					
	Applicable Indicators	Raw Score	Max. Poss. Score	Conversion Rating	Meets Standards			Exceeds Standards		
					Failed to Meet Standards	Minimal Performance	Acceptable Performance	Commendable Performance	Exceptional Performance	
					0-59%	60-69%	70-79%	80-89%	90-100%	
ADMINISTRATION										
1	Program Management	8	40	72	71%			X		
10	Training & Staff Devlop.	3	22	27	91%					X
					0-59%	60-69%	70-79%	80-89%	90-100%	
							X			
CORE SERVICES										
2	Bookino	4	14	36	54%	X				
3	Living Environment	10	53	90	74%			X		
4	Mental Health/Substance	11	51	99	67%		X			
5	Behavior Management	8	32	72	60%		X			
6	Food Services	3	13	27	64%		X			
7	Health Services	13	72	117	76%			X		
					0-59%	60-69%	70-79%	80-89%	90-100%	
						X				
SAFETY AND SECURITY										
8	Program Security	9	48	81	74%			X		
9	Program Safetv	4	17	36	63%		X			
					0-59%	60-69%	70-79%	80-89%	90-100%	
							X			
EDUCATIONAL SERVICES**										
E1	Transition	2	10	18	71%			X		
F2	Service Delivery	2	15	18	92%					X
F3	Educational Resources	2	12	18	81%			X		
F4	Contract Management	1	7	9	90%					X
					0-59%	60-69%	70-79%	80-89%	90-100%	
								X		
OVERALL PROGRAM PERFORMANCE										
Maximum Possible Score: 720					Failed	Minimal	Acceptable	Commendable	Exceptional	
Program Score: 406					0-59%	60-69%	70-79%	80-89%	90-100%	
Conversion Rating: 71%										
Program Performance: Acceptable Performance							X			
OVERALL COMPLIANCE RATING										
Maximum Possible Score: 84					Non-Compliance	Substantial Compliance	Full Compliance			
Compliance Score: 74.8					0-79%	80-89%	90-100%			
Compliance Rating: 89%										
Substantial Compliance						X				

A conversion formula has been applied to the raw score and max. possible score so that percentages fall within a recognizable grading scale.

Leon Regional Juvenile Detention Center

Program Type: Detention-Secure
 Restrictiveness Level: NA
 Contract Provider: State Operated
 Review Date: March 8-12, 2004

Circuit: 2
 County: Leon
 Contract Number: NA
 Number of Beds: 56

PROGRAM COMPONENTS	Standard Score*				Performance Rating				
	Applicable Indicators	Raw Score	Max. Poss. Score	Conversion Rating	Meets Standards			Exceeds Standards	
					Failed to Meet Standards	Minimal Performance	Acceptable Performance	Commendable Performance	Exceptional Performance
					0-59%	60-69%	70-79%	80-89%	90-100%
ADMINISTRATION									
1 Program Management	8	57	72	90%					X
10 Training & Staff Devlp.	3	24	27	95%					X
					0-59%	60-69%	70-79%	80-89%	90-100%
									X
CORE SERVICES									
2 Booking	4	27	36	87%				X	
3 Living Environment	10	64	90	84%				X	
4 Mental Health/Substance	11	82	99	92%					X
5 Behavior Management	8	41	72	72%			X		
6 Food Services	3	18	27	81%				X	
7 Health Services	13	67	117	72%			X		
					0-59%	60-69%	70-79%	80-89%	90-100%
								X	
SAFETY AND SECURITY									
8 Program Security	9	56	81	82%				X	
9 Program Safety	4	24	36	81%				X	
					0-59%	60-69%	70-79%	80-89%	90-100%
								X	
EDUCATIONAL SERVICES**									
F1 Transition	2	9	18	65%		X			
F2 Service Delivery	2	11	18	75%			X		
F3 Educational Resources	2	10	18	71%			X		
F4 Contract Management	1	5	9	71%			X		
					0-59%	60-69%	70-79%	80-89%	90-100%
							X		
OVERALL PROGRAM PERFORMANCE									
Maximum Possible Score:	711				Failed	Minimal	Acceptable	Commendable	Exceptional
Program Score:	490				0-59%	60-69%	70-79%	80-89%	90-100%
Conversion Rating:	82%								
Program Performance:	Commendable Performance							X	
OVERALL COMPLIANCE RATING									
Maximum Possible Score:	82				Non-Compliance		Substantial Compliance		Full Compliance
Compliance Score:	81.6				0-79%		80-89%		90-100%
Compliance Rating:	100%								X
	Full Compliance								X

A conversion formula has been applied to the raw score and max. possible score so that percentages fall within a recognizable grading scale.

Manatee Regional Juvenile Detention Center

Program Type:	Detention-Secure	Circuit:	Twelve
Restrictiveness Level:	NA	County:	Manatee
Contract Provider:	State Operated	Contract Number:	NA
Review Date:	June 7-11, 2004	Number of Beds:	72

PROGRAM COMPONENTS	Standard Score*				Performance Rating					
	Applicable Indicators	Raw Score	Max. Poss. Score	Conversion Rating	Meets Standards			Exceeds Standards		
					Failed to Meet Standards	Minimal Performance	Acceptable Performance	Commendable Performance	Exceptional Performance	
					0-59%	60-69%	70-79%	80-89%	90-100%	
ADMINISTRATION										
1	Program Management	8	56	72	90%					X
10	Training & Staff Devlp.	4	25	36	82%				X	
					0-59%	60-69%	70-79%	80-89%	90-100%	
								X		
CORE SERVICES										
2	Booking	4	28	36	90%					X
3	Living Environment	10	67	90	87%				X	
4	Mental Health/Substance	11	54	99	70%			X		
5	Behavior Management	8	55	72	88%				X	
6	Food Services	3	18	27	81%				X	
7	Health Services	13	67	117	72%			X		
					0-59%	60-69%	70-79%	80-89%	90-100%	
								X		
SAFETY AND SECURITY										
8	Program Security	9	67	81	92%					X
9	Program Safety	4	29	36	91%					X
					0-59%	60-69%	70-79%	80-89%	90-100%	
										X
EDUCATIONAL SERVICES**										
E1	Transition	2	12	18	81%				X	
E2	Service Delivery	2	12	18	81%				X	
E3	Educational Resources	2	13	18	85%				X	
E4	Contract Management	1	6	9	81%				X	
					0-59%	60-69%	70-79%	80-89%	90-100%	
								X		
OVERALL PROGRAM PERFORMANCE										
Maximum Possible Score: 729					Failed	Minimal	Acceptable	Commendable	Exceptional	
Program Score: 509					0-59%	60-69%	70-79%	80-89%	90-100%	
Conversion Rating: 83%										
Program Performance: Commendable Performance								X		
OVERALL COMPLIANCE RATING										
Maximum Possible Score: 84					Non-Compliance		Substantial Compliance		Full Compliance	
Compliance Score: 81.6					0-79%		80-89%		90-100%	
Compliance Rating: 97%										
Full Compliance										X

A conversion formula has been applied to the raw score and max. possible score so that percentages fall within a recognizable grading scale.

Miami-Dade Regional Juvenile Detention Center

Program Type: Detention-Secure
 Restrictiveness Level: NA
 Contract Provider: State Operated
 Review Date: June 7-11, 2004

Circuit: Eleven
 County: Miami-Dade
 Contract Number: NA
 Number of Beds: 226

PROGRAM COMPONENTS	Standard Score*				Performance Rating					
	Applicable Indicators	Raw Score	Max. Poss. Score	Conversion Rating	Meets Standards			Exceeds Standards		
					Failed to Meet Standards	Minimal Performance	Acceptable Performance	Commendable Performance	Exceptional Performance	
					0-59%	60-69%	70-79%	80-89%	90-100%	
ADMINISTRATION										
1	Program Management	8	37	72	66%		X			
10	Training & Staff Devlp.	3	21	27	90%					X
					0-59%	60-69%	70-79%	80-89%	90-100%	
							X			
CORE SERVICES										
2	Booking	4	16	36	60%		X			
3	Living Environment	10	61	90	82%			X		
4	Mental Health/Substance	10	23	90	36%	X				
5	Behavior Management	8	25	72	48%	X				
6	Food Services	3	17	27	77%			X		
7	Health Services	13	31	117	36%	X				
					0-59%	60-69%	70-79%	80-89%	90-100%	
					X					
SAFETY AND SECURITY										
8	Program Security	9	27	81	45%	X				
9	Program Safety	4	15	36	58%	X				
					0-59%	60-69%	70-79%	80-89%	90-100%	
					X					
EDUCATIONAL SERVICES**										
E1	Transition	2	10	18	71%			X		
E2	Service Delivery	2	9	18	65%		X			
E3	Educational Resources	2	10	18	71%			X		
E4	Contract Management	1	2	9	30%	X				
					0-59%	60-69%	70-79%	80-89%	90-100%	
						X				
OVERALL PROGRAM PERFORMANCE										
Maximum Possible Score: 702					Failed	Minimal	Acceptable	Commendable	Exceptional	
Program Score: 302					0-59%	60-69%	70-79%	80-89%	90-100%	
Conversion Rating: 59%										
Program Performance: Failed to Meet Standards					X					
OVERALL COMPLIANCE RATING										
Maximum Possible Score: 88					Non-Compliance		Substantial Compliance		Full Compliance	
Compliance Score: 70.8					0-79%		80-89%		90-100%	
Compliance Rating: 80%							X			
Substantial Compliance										

A conversion formula has been applied to the raw score and max. possible score so that percentages fall within a recognizable grading scale.

Orange Regional Juvenile Detention Center

Program Type:	Detention-Secure	Circuit:	Nine
Restrictiveness Level:	NA	County:	Orange
Contract Provider:	State Operated	Contract Number:	NA
Review Date:	August 9-12, 2004 & August 19-20, 2004	Number of Beds:	151

PROGRAM COMPONENTS	Standard Score*				Performance Rating					
	Applicable Indicators	Raw Score	Max. Poss. Score	Conversion Rating	Meets Standards			Exceeds Standards		
					Failed to Meet Standards	Minimal Performance	Acceptable Performance	Commendable Performance	Exceptional Performance	
					0-59%	60-69%	70-79%	80-89%	90-100%	
ADMINISTRATION										
1	Program Management	8	37	72	66%		X			
10	Training & Staff Devlp.	3	13	27	64%		X			
						0-59%	60-69%	70-79%	80-89%	90-100%
							X			
CORE SERVICES										
2	Booking	4	20	36	71%			X		
3	Living Environment	10	47	90	67%		X			
4	Mental Health/Substance	11	41	99	56%	X				
5	Behavior Management	8	27	72	52%	X				
6	Food Services	3	13	27	64%		X			
7	Health Services	13	49	117	58%	X				
						0-59%	60-69%	70-79%	80-89%	90-100%
							X			
SAFETY AND SECURITY										
8	Program Security	9	40	81	64%		X			
9	Program Safety	4	14	36	54%	X				
						0-59%	60-69%	70-79%	80-89%	90-100%
							X			
EDUCATIONAL SERVICES**										
E1	Transition	2	15	18	92%					X
E2	Service Delivery	2	16	18	95%					X
E3	Educational Resources	2	16	18	95%					X
E4	Contract Management	1	8	9	95%					X
						0-59%	60-69%	70-79%	80-89%	90-100%
										X
OVERALL PROGRAM PERFORMANCE										
Maximum Possible Score: 720						Failed	Minimal	Acceptable	Commendable	Exceptional
Program Score: 356						0-59%	60-69%	70-79%	80-89%	90-100%
Conversion Rating: 64%										
Program Performance: Minimal Performance							X			
OVERALL COMPLIANCE RATING										
Maximum Possible Score: 86						Non-Compliance		Substantial Compliance		Full Compliance
Compliance Score: 70						0-79%		80-89%		90-100%
Compliance Rating: 81%								X		
Substantial Compliance								X		

A conversion formula has been applied to the raw score and max. possible score so that percentages fall within a recognizable grading scale.

Palm Beach Regional Juvenile Detention Center

Program Type: Detention-Secure
 Restrictiveness Level: NA
 Contract Provider: State Operated
 Review Date: July 15-16, 2004

Circuit: Fifteen
 County: Palm Beach
 Contract Number: NA
 Number of Beds: 93

PROGRAM COMPONENTS	Standard Score*				Performance Rating					
	Applicable Indicators	Raw Score	Max. Poss. Score	Conversion Rating	Meets Standards			Exceeds Standards		
					Failed to Meet Standards	Minimal Performance	Acceptable Performance	Commendable Performance	Exceptional Performance	
					0-59%	60-69%	70-79%	80-89%	90-100%	
ADMINISTRATION										
1	Program Management	8	36	72	65%		X			
10	Training & Staff Devlp.	4	26	36	85%				X	
						0-59%	60-69%	70-79%	80-89%	90-100%
								X		
CORE SERVICES										
2	Booking	4	21	36	73%			X		
3	Living Environment	10	57	90	77%			X		
4	Mental Health/Substance	11	23	99	32%	X				
5	Behavior Management	8	33	72	62%		X			
6	Food Services	3	18	27	81%				X	
7	Health Services	13	72	117	76%			X		
						0-59%	60-69%	70-79%	80-89%	90-100%
							X			
SAFETY AND SECURITY										
8	Program Security	9	42	81	67%		X			
9	Program Safety	4	27	36	87%				X	
						0-59%	60-69%	70-79%	80-89%	90-100%
								X		
EDUCATIONAL SERVICES**										
E1	Transition	2	9	18	65%		X			
F2	Service Delivery	2	12	18	81%				X	
F3	Educational Resources	2	12	18	81%				X	
E4	Contract Management	1	7	9	90%					X
						0-59%	60-69%	70-79%	80-89%	90-100%
								X		
OVERALL PROGRAM PERFORMANCE										
Maximum Possible Score: 720						Failed	Minimal	Acceptable	Commendable	Exceptional
Program Score: 388						0-59%	60-69%	70-79%	80-89%	90-100%
Conversion Rating: 69%										
Program Performance: Minimal Performance							X			
OVERALL COMPLIANCE RATING										
Maximum Possible Score: 86						Non-Compliance		Substantial Compliance		Full Compliance
Compliance Score: 78.8						0-79%		80-89%		90-100%
Compliance Rating: 92%										
Full Compliance										X

A conversion formula has been applied to the raw score and max. possible score so that percentages fall within a recognizable grading scale.

Pasco Regional Juvenile Detention Center

Program Type:	Detention-Secure	Circuit:	Six
Restrictiveness Level:	NA	County:	Pasco
Contract Provider:	State Operated	Contract Number:	NA
Review Date:	July 12-16, 2004	Number of Beds:	57

PROGRAM COMPONENTS	Standard Score*				Performance Rating					
	Applicable Indicators	Raw Score	Max. Poss. Score	Conversion Rating	Meets Standards			Exceeds Standards		
					Failed to Meet Standards	Minimal Performance	Acceptable Performance	Commendable Performance	Exceptional Performance	
					0-59%	60-69%	70-79%	80-89%	90-100%	
ADMINISTRATION										
1	Program Management	8	55	72	88%				X	
10	Training & Staff Devlp.	3	21	27	90%					X
					0-59%	60-69%	70-79%	80-89%	90-100%	
								X		
CORE SERVICES										
2	Booking	4	28	36	90%					X
3	Living Environment	10	66	90	86%				X	
4	Mental Health/Substance	11	45	99	61%	X				
5	Behavior Management	8	37	72	66%	X				
6	Food Services	3	19	27	83%				X	
7	Health Services	13	78	117	81%				X	
					0-59%	60-69%	70-79%	80-89%	90-100%	
							X			
SAFETY AND SECURITY										
8	Program Security	9	55	81	82%				X	
9	Program Safety	4	25	36	82%				X	
					0-59%	60-69%	70-79%	80-89%	90-100%	
								X		
EDUCATIONAL SERVICES**										
E1	Transition	2	14	18	90%					X
E2	Service Delivery	2	14	18	90%					X
E3	Educational Resources	2	14	18	90%					X
E4	Contract Management	1	7	9	90%					X
					0-59%	60-69%	70-79%	80-89%	90-100%	
										X
OVERALL PROGRAM PERFORMANCE										
Maximum Possible Score:		720			Failed	Minimal	Acceptable	Commendable	Exceptional	
Program Score:		478			0-59%	60-69%	70-79%	80-89%	90-100%	
Conversion Rating:		80%								
Program Performance:		Commendable Performance						X		
OVERALL COMPLIANCE RATING										
Maximum Possible Score:		84			Non-Compliance		Substantial Compliance		Full Compliance	
Compliance Score:		83.2			0-79%		80-89%		90-100%	
Compliance Rating:		99%								X
		Full Compliance								

A conversion formula has been applied to the raw score and max. possible score so that percentages fall within a recognizable grading scale.

Polk Detention Center

Program Type:	Detention-Secure	Circuit:	10
Restrictiveness Level:	NA	County:	Polk
Contract Provider:	State Operated	Contract Number:	NA
Review Date:	March 29-April 2, 2004	Number of Beds:	90

PROGRAM COMPONENTS	Standard Score*				Performance Rating					
	Applicable Indicators	Raw Score	Max. Poss. Score	Conversion Rating	Meets Standards			Exceeds Standards		
					Failed to Meet Standards	Minimal Performance	Acceptable Performance	Commendable Performance	Exceptional Performance	
					0-59%	60-69%	70-79%	80-89%	90-100%	
ADMINISTRATION										
1	Program Management	8	57	72	90%					X
10	Training & Staff Devlop.	3	24	27	95%					X
						0-59%	60-69%	70-79%	80-89%	90-100%
										X
CORE SERVICES										
2	Booking	4	27	36	87%				X	
3	Living Environment	10	58	90	78%			X		
4	Mental Health/Substance	11	46	99	62%	X				
5	Behavior Management	8	46	72	78%			X		
6	Food Services	3	19	27	83%				X	
7	Health Services	13	75	117	78%			X		
						0-59%	60-69%	70-79%	80-89%	90-100%
								X		
SAFETY AND SECURITY										
8	Program Security	9	59	81	86%				X	
9	Program Safety	4	27	36	87%				X	
						0-59%	60-69%	70-79%	80-89%	90-100%
									X	
EDUCATIONAL SERVICES**										
E1	Transition	2	12	18	81%				X	
F2	Service Delivery	2	14	18	90%					X
F3	Educational Resources	2	12	18	81%				X	
F4	Contract Management	1	7	9	90%					X
						0-59%	60-69%	70-79%	80-89%	90-100%
									X	
OVERALL PROGRAM PERFORMANCE										
Maximum Possible Score: 711						Failed	Minimal	Acceptable	Commendable	Exceptional
Program Score: 476						0-59%	60-69%	70-79%	80-89%	90-100%
Conversion Rating: 81%										
Program Performance: Commendable Performance									X	
OVERALL COMPLIANCE RATING										
Maximum Possible Score: 84						Non-Compliance		Substantial Compliance		Full Compliance
Compliance Score: 82.8						0-79%		80-89%		90-100%
Compliance Rating: 99%										
Full Compliance										X

A conversion formula has been applied to the raw score and max. possible score so that percentages fall within a recognizable grading scale.

Seminole Regional Juvenile Detention Center

Program Type:	Detention-Secure	Circuit:	Eighteen
Restrictiveness Level:	NA	County:	Seminole
Contract Provider:	State of Florida	Contract Number:	NA
Review Date:	June 14-18, 2004	Number of Beds:	39

PROGRAM COMPONENTS	Standard Score*				Performance Rating					
	Applicable Indicators	Raw Score	Max. Poss. Score	Conversion Rating	Meets Standards			Exceeds Standards		
					Failed to Meet Standards	Minimal Performance	Acceptable Performance	Commendable Performance	Exceptional Performance	
					0-59%	60-69%	70-79%	80-89%	90-100%	
ADMINISTRATION										
1	Program Management	8	43	72	74%			X		
10	Training & Staff Devlop	3	13	27	64%		X			
						0-59%	60-69%	70-79%	80-89%	90-100%
								X		
CORE SERVICES										
2	Booking	4	24	36	81%				X	
3	Living Environment	10	55	90	75%			X		
4	Mental Health/Substance	11	64	99	79%			X		
5	Behavior Management	8	28	72	54%	X				
6	Food Services	3	17	27	77%			X		
7	Health Services	13	66	117	71%			X		
						0-59%	60-69%	70-79%	80-89%	90-100%
								X		
SAFETY AND SECURITY										
8	Program Security	9	47	81	73%			X		
9	Program Safety	4	20	36	71%			X		
						0-59%	60-69%	70-79%	80-89%	90-100%
								X		
EDUCATIONAL SERVICES**										
F1	Transition	2	11	18	75%			X		
F2	Service Delivery	2	12	18	81%				X	
E3	Educational Resources	2	15	18	92%					X
E4	Contract Management	1	7	9	90%					X
						0-59%	60-69%	70-79%	80-89%	90-100%
									X	
OVERALL PROGRAM PERFORMANCE										
Maximum Possible Score: 711						Failed	Minimal	Acceptable	Commendable	Exceptional
Program Score: 415						0-59%	60-69%	70-79%	80-89%	90-100%
Conversion Rating: 73%										
Program Performance: Acceptable Performance								X		
OVERALL COMPLIANCE RATING										
Maximum Possible Score: 86						Non-Compliance		Substantial Compliance		Full Compliance
Compliance Score: 82.4						0-79%		80-89%		90-100%
Compliance Rating: 96%										
Full Compliance										X

A conversion formula has been applied to the raw score and max. possible score so that percentages fall within a recognizable grading scale.

Southwest Florida Regional Juvenile Detention Center

Program Type:	Detention-Secure	Circuit:	Twenty
Restrictiveness Level:	NA	County:	Lee
Contract Provider:	Securicor New Century	Contract Number:	X1155
Review Date:	October 4-8, 2004	Number of Beds:	60

PROGRAM COMPONENTS	Standard Score*				Performance Rating					
	Applicable Indicators	Raw Score	Max. Poss. Score	Conversion Rating	Meets Standards		Exceeds Standards			
					Failed to Meet Standards	Minimal Performance	Acceptable Performance	Commendable Performance	Exceptional Performance	
					0-59%	60-69%	70-79%	80-89%	90-100%	
ADMINISTRATION										
1	Program Management	8	40	72	71%			X		
10	Training & Staff Devlp.	4	23	36	78%			X		
					0-59%	60-69%	70-79%	80-89%	90-100%	
							X			
CORE SERVICES										
2	Booking	4	28	36	90%					X
3	Living Environment	10	51	90	72%			X		
4	Mental Health/Substance	10	39	90	59%	X				
5	Behavior Management	8	26	72	49%	X				
6	Food Services	3	19	27	83%				X	
7	Health Services	13	67	117	72%			X		
					0-59%	60-69%	70-79%	80-89%	90-100%	
						X				
SAFETY AND SECURITY										
8	Program Security	9	51	81	77%			X		
9	Program Safety	4	23	36	78%			X		
					0-59%	60-69%	70-79%	80-89%	90-100%	
							X			
EDUCATIONAL SERVICES**										
F1	Transition	2	8	18	60%		X			
F2	Service Delivery	2	8	18	60%		X			
F3	Educational Resources	2	9	18	65%		X			
F4	Contract Management	1	5	9	71%			X		
					0-59%	60-69%	70-79%	80-89%	90-100%	
						X				
OVERALL PROGRAM PERFORMANCE										
Maximum Possible Score: 711					Failed	Minimal	Acceptable	Commendable	Exceptional	
Program Score: 392					0-59%	60-69%	70-79%	80-89%	90-100%	
Conversion Rating: 70%										
Program Performance: Acceptable Performance							X			
OVERALL COMPLIANCE RATING										
Maximum Possible Score: 82					Non-Compliance	Substantial Compliance	Full Compliance			
Compliance Score: 74.4					0-79%	80-89%	90-100%			
Compliance Rating: 91%										
Full Compliance								X		

A conversion formula has been applied to the raw score and max. possible score so that percentages fall within a recognizable grading scale.

St. Lucie Regional Juvenile Detention Center

Program Type:	Detention- Secure	Circuit:	Nineteen
Restrictiveness Level:	NA	County:	St. Lucie
Contract Provider:	State Operated	Contract Number:	NA
Review Date:	May 17-21, 2004	Number of Beds:	78

PROGRAM COMPONENTS	Standard Score*				Performance Rating					
	Applicable Indicators	Raw Score	Max. Poss. Score	Conversion Rating	Meets Standards			Exceeds Standards		
					Failed to Meet Standards	Minimal Performance	Acceptable Performance	Commendable Performance	Exceptional Performance	
					0-59%	60-69%	70-79%	80-89%	90-100%	
ADMINISTRATION										
1	Program Management	8	36	72	65%		X			
10	Training & Staff Devlp.	3	21	27	90%					X
					0-59%	60-69%	70-79%	80-89%	90-100%	
							X			
CORE SERVICES										
2	Booking	4	27	36	87%				X	
3	Living Environment	10	54	90	74%			X		
4	Mental Health/Substance	10	48	90	68%	X				
5	Behavior Management	8	42	72	73%			X		
6	Food Services	3	15	27	71%			X		
7	Health Services	13	65	117	71%			X		
					0-59%	60-69%	70-79%	80-89%	90-100%	
							X			
SAFETY AND SECURITY										
8	Program Security	9	55	81	82%				X	
9	Program Safety	4	25	36	82%				X	
					0-59%	60-69%	70-79%	80-89%	90-100%	
								X		
EDUCATIONAL SERVICES**										
F1	Transition	2	14	18	90%					X
E2	Service Delivery	2	13	18	85%				X	
F3	Educational Resources	2	12	18	81%				X	
F4	Contract Management	1	7	9	90%					X
					0-59%	60-69%	70-79%	80-89%	90-100%	
								X		
OVERALL PROGRAM PERFORMANCE										
Maximum Possible Score: 702					Failed	Minimal	Acceptable	Commendable	Exceptional	
Program Score: 427					0-59%	60-69%	70-79%	80-89%	90-100%	
Conversion Rating: 75%										
Program Performance: Acceptable Performance							X			
OVERALL COMPLIANCE RATING										
Maximum Possible Score: 86					Non-Compliance		Substantial Compliance		Full Compliance	
Compliance Score: 79.6					0-79%		80-89%		90-100%	
Compliance Rating: 93%										
Full Compliance										X

A conversion formula has been applied to the raw score and max. possible score so that percentages fall within a recognizable grading scale.

Volusia Regional Juvenile Detention Center

Program Type:	Detention-Secure	Circuit:	Seven
Restrictiveness Level:	NA	County:	Volusia
Contract Provider:	State Operated	Contract Number:	NA
Review Date:	July 12-16, 2004	Number of Beds:	90

PROGRAM COMPONENTS	Standard Score*				Performance Rating					
	Applicable Indicators	Raw Score	Max. Poss. Score	Conversion Rating	Meets Standards			Exceeds Standards		
					Failed to Meet Standards	Minimal Performance	Acceptable Performance	Commendable Performance	Exceptional Performance	
					0-59%	60-69%	70-79%	80-89%	90-100%	
ADMINISTRATION										
1	Program Management	8	54	72	87%				X	
10	Training & Staff Devlp.	3	23	27	93%					X
						0-59%	60-69%	70-79%	80-89%	90-100%
									X	
CORE SERVICES										
2	Booking	4	29	36	91%					X
3	Living Environment	10	65	90	85%				X	
4	Mental Health/Substance	10	47	90	67%	X				
5	Behavior Management	8	41	72	72%			X		
6	Food Services	3	17	27	77%			X		
7	Health Services	13	81	117	82%				X	
						0-59%	60-69%	70-79%	80-89%	90-100%
								X		
SAFETY AND SECURITY										
8	Program Security	9	51	81	77%			X		
9	Program Safety	4	31	36	94%					X
						0-59%	60-69%	70-79%	80-89%	90-100%
									X	
EDUCATIONAL SERVICES**										
E1	Transition	2	11	18	75%			X		
F2	Service Delivery	2	13	18	85%				X	
E3	Educational Resources	2	14	18	90%					X
E4	Contract Management	1	7	9	90%					X
						0-59%	60-69%	70-79%	80-89%	90-100%
									X	
OVERALL PROGRAM PERFORMANCE										
Maximum Possible Score:		702			Failed	Minimal	Acceptable	Commendable	Exceptional	
Program Score:		477			0-59%	60-69%	70-79%	80-89%	90-100%	
Conversion Rating:		82%								
Program Performance:		Commendable Performance						X		
OVERALL COMPLIANCE RATING										
Maximum Possible Score:		84			Non-Compliance		Substantial Compliance		Full Compliance	
Compliance Score:		82.8			0-79%		80-89%		90-100%	
Compliance Rating:		99%							X	
		Full Compliance							X	

A conversion formula has been applied to the raw score and max. possible score so that percentages fall within a recognizable grading scale.